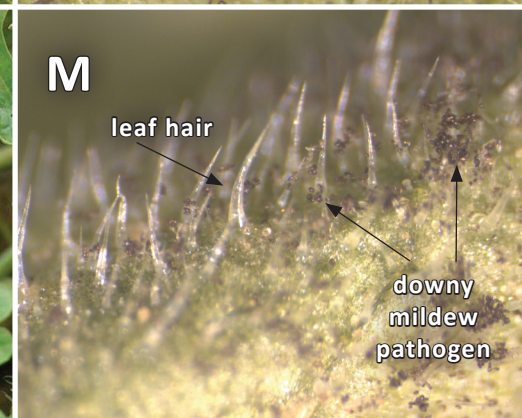
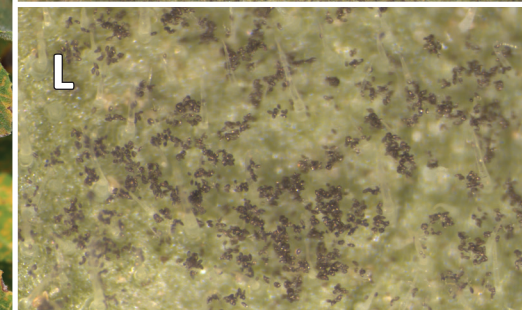
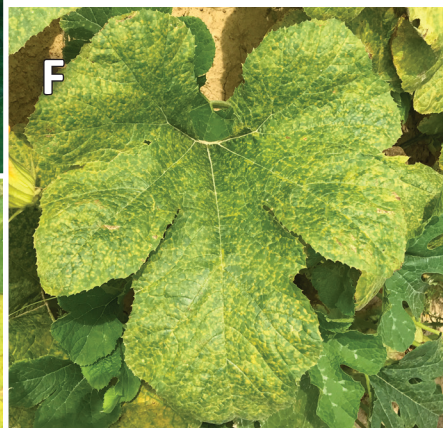
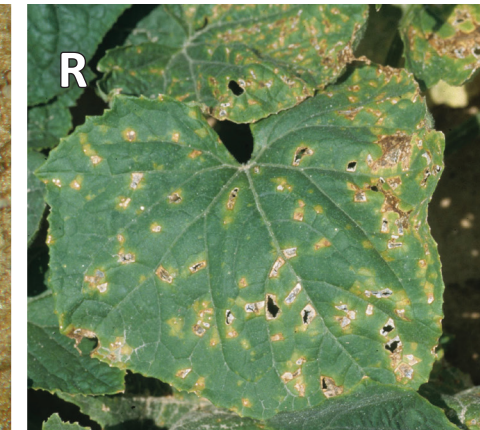
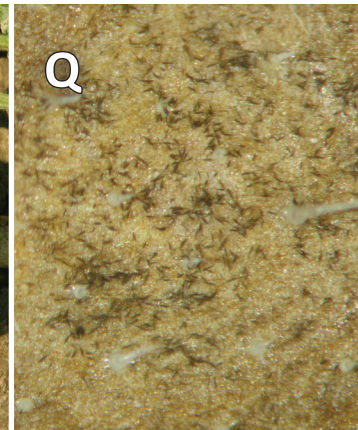
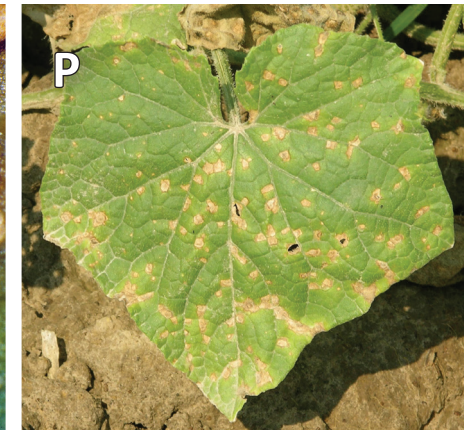
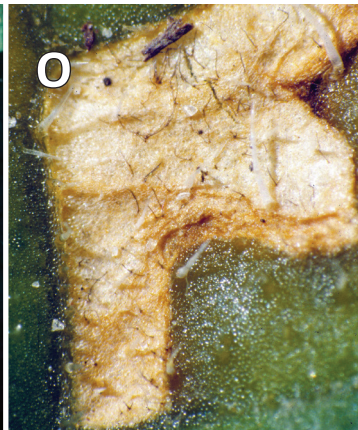


# A Photo Guide to CUCURBIT DOWNY MILDEW



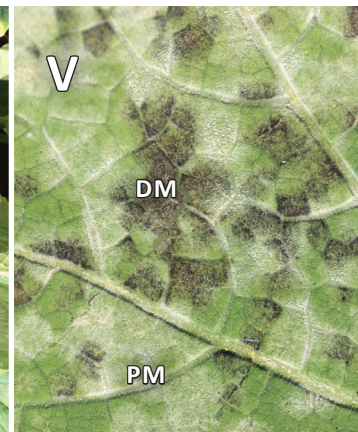
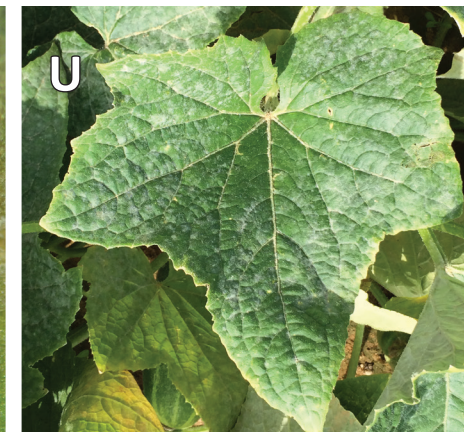
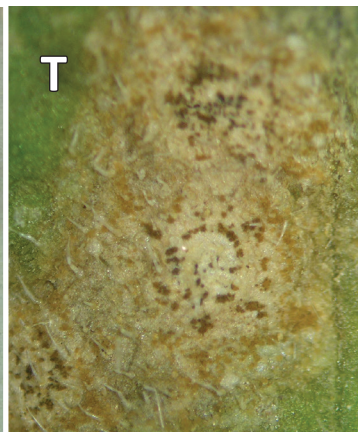
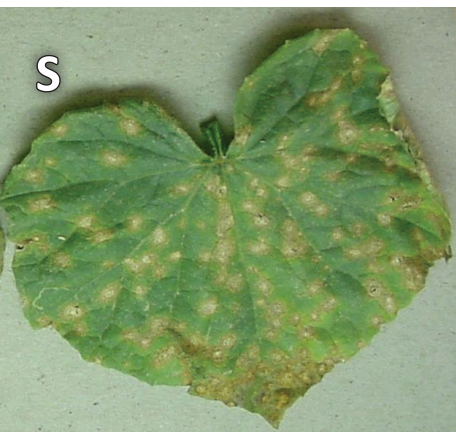
# CUCURBIT DISEASES THAT MAY BE MISTAKEN FOR CUCURBIT DOWNY MILDEW



**N** Target Leaf Spot (*Corynespora* Leaf Spot)

**P** Alternaria Leaf Blight

**R** Angular Leaf Spot



**S** Anthracnose

**V** Powdery Mildew

**Diseases:** Symptoms of downy mildew on cucumber (A, B, C), cantaloupe (D), squash (E), pumpkin (F, G), and watermelon (H, I). Signs of the downy mildew pathogen, *Pseudoperonospora cubensis*, on butternut squash (J, K, L, M). Symptoms (N) and signs (O) of target leaf spot on cucumber. Symptoms (P) and signs (Q) of Alternaria leaf blight on cucumber and cantaloupe, respectively. Symptoms of angular leaf spot on cucumber (R). Symptoms (S) and signs (T) of anthracnose on cucumber. Signs (U, V, W) of powdery mildew on various cucurbits. Signs of downy mildew (DM) are also present in photo V. **The pictured diseases are a selection of the most common diseases that may be confused with downy mildew. Symptoms and the presence of signs with each disease may vary. Images alone should not be used to obtain an accurate diagnosis. For more information on cucurbit downy mildew, see MSU Extension Publication 3076 *Cucurbit Downy Mildew*.**

**Photo credits:** (A, C, E, F, G, J, K, L, M, U) R. A. Melanson, MSU Extension, Bugwood.org; (B, D, N, R, V) G. Holmes, Cal Poly–San Luis Obispo, Bugwood.org; (H, I) J. Brock, University of Georgia, Bugwood.org; (O) C. Averre, North Carolina State University, Bugwood.org; (P) D. Ferrin, LSU AgCenter, Bugwood.org; and (Q, S, T, W) P. Bachi, University of Kentucky Research and Education Center, Bugwood.org.

## Publication 3358

By **Rebecca A. Melanson**, PhD, Assistant Extension Professor, Plant Pathology, Central Mississippi Research and Extension Center.

Copyright 2019 by Mississippi State University. All rights reserved. This publication may be copied and distributed without alteration for nonprofit educational purposes provided that credit is given to the Mississippi State University Extension Service.

Mississippi State University is an equal opportunity institution.

This publication is partially supported by a USDA Agricultural Marketing Service Specialty Crop Multi-State Program grant administered by the Pennsylvania Department of Agriculture, PDA No. 44187029, Subaward No. 6060-MSU-PDA-7029. Any opinions or recommendations expressed in this publication do not necessarily reflect the views of any of these organizations.



**MISSISSIPPI STATE UNIVERSITY™**  
**EXTENSION**